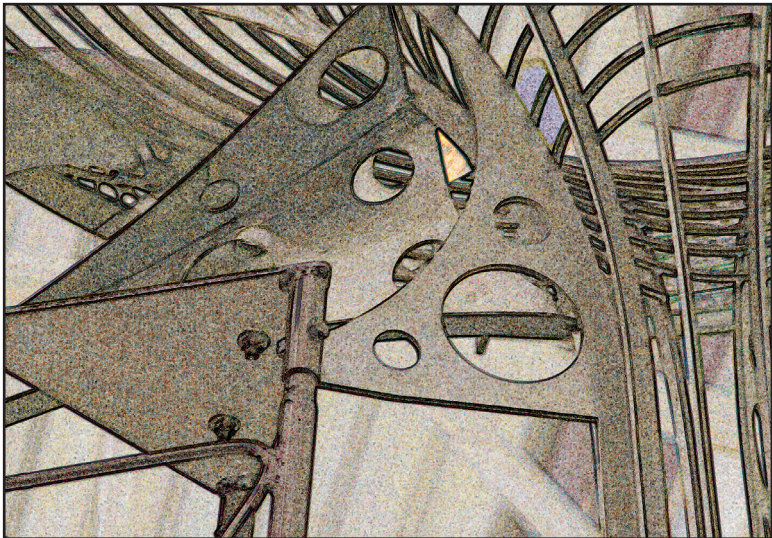


Annual Report 2005/2006
Ann Arbor District Library



Building on Our Strengths

Vision

The Ann Arbor District Library provides collections, programs, and leadership to promote the development of literate and informed citizens through open and equal access to cultural, intellectual, recreational, and information resources.



Mission

The existence of the Ann Arbor District Library assures public ownership of print collections, digital resources, and gathering spaces for the citizens of the library district. We are committed to sustaining the value of public library services for the greater Ann Arbor community through the use of traditional and innovative technologies.

Values

- Excellence in customer service*
- Providing, supporting, and advocating access for all*
- Acting with initiative, creativity, and flexibility*
- Working together, with enthusiasm and optimism, to reach goals*
- Responsible stewardship of resources*

March 20, 2006



Pittsfield Branch Opens

Pittsfield Branch Opens



Pittsfield Branch opened on March 20, 2006, drawing record crowds. In its first week, over 15,000 items were checked out or renewed, while 1,200 individuals enjoyed opening week events—which ranged from Middle Eastern dance to a Broadway revue.



The one-story 16,500 square foot branch is the first in the district to be built outside the city limits of Ann Arbor. It was designed by Luckenbach|Ziegelman Architects PLLC, constructed by Skanska USA Building, Inc. and landscaped by InSite Design Studio, Inc.

Visitors to the Branch enjoy several unique landmarks of the facility:

- The *Homer Chance Reading Room* honors the former Ann Arbor Library director who initiated branch expansion in the district while serving as director from 1951-1977.
- The towering *Interactive Bernoulli Exhibit*, commissioned by the Library, allows visitors to maneuver brightly-colored balls through a stainless steel vortex-shaped structure. It was constructed and installed by the Ann Arbor Hands-On Museum.
- A tiled mural, entitled *The Boy Reading*, produced by Motawi Tileworks of Ann Arbor and dedicated in memory of Fred Walter by his family, graces the wall of the youth area.

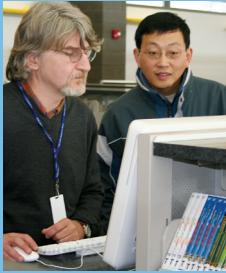
Located in Pittsfield Township near the Ann Arbor Ice Cube, the Branch serves as a community-based learning center that delivers superior customer service, primarily to the residents of the southwest quadrant of Ann Arbor and Pittsfield Township.





Programs, Services & Staff

Programs, Services & Staff



December 2006 marked the 10th anniversary of the District Library—ten years ago the Library separated from the Ann Arbor Public Schools and became its own entity with its own governing board.

Since that time, the Library has continued to expand, not only in its building expansion, but in its services, programs and usage.

Of particular note this past year:

- Circulation statistics rose 61% over the previous year. The number of checkouts, renewals and online renewals reached an all-time high of over 5.2 million. Visits to Library buildings were among other noted increases—rising 8% to 1.4 million.
- Library staff continued to win accolades. Highlights of 2005/2006: Youth Librarian Laura Pershin Raynor was awarded the Michigan Library Association’s distinguished Children’s Services Division Award of Merit, and Network Administrator John Blyberg was named one of the 2006 Library Movers and Shakers by *Library Journal*.
- Jonathan Weiner, author of the 2006 Ann Arbor/Ypsilanti Reads book *The Beak of the Finch*, and scientists Peter and Rosemary Grant, whose work was the subject of Weiner’s book, drew capacity crowds at two off-site community events.
- News journalists and political commentators Cokie and Steve Roberts spoke to a crowd of 325 about their careers and book, *From This Day Forward*. This special Library event was held at The Ark and cosponsored by the Jewish Community Center.



[ABOUT US](#) [CATALOG](#) [EVENTS](#) [SERVICES](#) [RESEARCH](#) [CONTACT US](#) [MY ACCOUNT](#)



[ABOUT US](#) [CATALOG](#) [EVENTS](#) [SERVICES](#) [RESEARCH](#) [CONTACT US](#) [MY ACCOUNT](#)



[ABOUT US](#) [CATALOG](#) [EVENTS](#) [SERVICES](#) [RESEARCH](#) [CONTACT US](#) [MY ACCOUNT](#)

Award-Winning Website

Winning Website



The Library's website, aadl.org, which includes the catalog, research databases, events information and more, was extensively re-designed in July 2005. Skidmore Inc., an award-winning creative studio headquartered in Royal Oak, Michigan, worked with AADL staff members for five months to determine site goals, create a new site logo, conduct public usability studies and develop simple administrative tools for maintenance.

The website promptly garnered national attention:

- In September 2005, scarcely 2 months after the website went live, a prominent article in *Library Journal* praised AADL's blogs, which encourage the public to take part in discussions about Library collections, events, services and happenings. The blogs are now a major communications tool. Staff members throughout the system participate on a daily basis—initiating and quickly responding to discussion threads on Library issues, books, media and community happenings.
- By June 2006, the site had been selected as the best Library website in the country by the American Library Association (ALA), winning the 2006 Swap and Shop Public Relations Award for best in the Web Page/Home Page category for larger library systems. The award was presented in June at the American Library Association's annual conference in New Orleans.

Board of Trustees



front row l to r:

Margaret Leary, Treasurer

Edward Surovell, President

Barbara Murphy, Vice President

David Cahill, Secretary

back row l to r:

Rebecca Head

William H. Kincaid

Connie Greene

President's Letter

For the Ann Arbor District Library, the year 2006 marked the completion of its first decade as an independent institution. Although there has been a public library in Ann Arbor since just after the Civil War, it was only a 1994 change in the Michigan Constitution that mandated our separation in 1996 from our parent, Ann Arbor Public Schools.



The most visible and enduring change the Library's mission has created in the greater Ann Arbor community is an expanded system of library branches. To replace the three modest branches in existence in 1996, we have planned for a new system of three to four full-service facilities of up to 18,000 square feet each. The second of these new buildings was opened to the public in March, and land acquisition and design have been completed for our third new facility to be located near our present Northeast Branch.

Although construction has commanded much of our attention in the last few years, what has been going on inside our facilities has kept up with the dramatic changes occurring worldwide in communication and in public libraries nationwide. That is the story we have to tell you in our 2006 Annual Report.

A handwritten signature in black ink that reads "Edward Surovell". The signature is written in a cursive, flowing style.

Edward Surovell, President

Director's Letter

The workforce of the AADL is one of its finest strengths.

Currently, two hundred and forty-seven people work hard to fulfill the strategic values adopted by the Library Board:

- Excellence in customer service*
- Providing, supporting, and advocating access for all*
- Acting with initiative, creativity, and flexibility*
- Working together, with enthusiasm and optimism, to reach goals*
- Responsible stewardship of resources*

We are committed to delivering the best possible public library services to our community in clean, safe, well-maintained buildings—and to do it with a smile. Many of you take the time to let staff members know directly that you appreciate their efforts. Many more of you take advantage of our patron comment form at aadl.org to tell us how well we are doing and what we can improve.

From all of us on the staff at AADL, thank you for your continued support of library services.

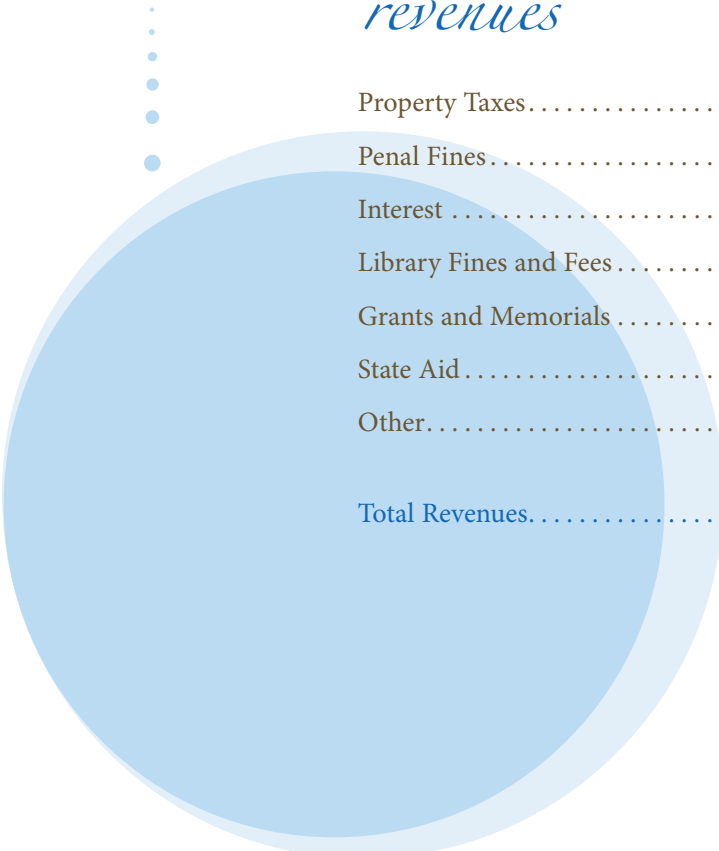


Josie Parker

Josie Parker, Director

Financial Report July 1, 2005 - June 30, 2006

revenues



Property Taxes.....	\$13,255,535.....	91.6%
Penal Fines.....	329,242.....	2.3
Interest.....	275,328.....	1.9
Library Fines and Fees.....	251,178.....	1.7
Grants and Memorials.....	185,176.....	1.3
State Aid.....	112,403.....	0.8
Other.....	60,841.....	0.4
Total Revenues.....	\$14,469,703.....	100.0%



expenditures

Employment Costs	\$6,965,184	40.0%
Capital Outlays	5,698,562	32.7
Materials	2,078,281	11.9
Purchased Services	848,173	4.9
Operating Supplies	832,608	4.8
Programming	303,994	1.8
Rentals	261,761	1.5
Other	232,826	1.2
Repairs and Maintenance	209,666	1.2
Total Expenditures	\$17,431,055	100.0%

Statistics

DISTRICT POPULATION SERVED	155,611
REGISTERED CARDHOLDERS	86,587
NEW LIBRARY CARDS ISSUED	13,189
CARDHOLDERS AS A PERCENT OF THE POPULATION	56%
PATRON COUNT (8% increase)	1,409,529
HOURS OPEN TO PUBLIC	3,780
DAYS OPEN TO PUBLIC	354
VISITS TO WEBSITE (242% increase)	18,743,043
Average hits per day	617,439
TOTAL REFERENCE QUESTIONS	76,635
NUMBER OF PROGRAMS OFFERED	1,048
TOTAL PROGRAM ATTENDANCE	46,214
SUMMER READING GAME	
Children enrolled	4,277
Teens enrolled	1,337
Adults enrolled	1,817
COMPUTER TRAINING CLASSES ATTENDANCE	2,136
SYSTEMWIDE YEARLY CIRCULATION (61% increase)	5,202,103
Downtown	885,497
Malletts Creek	503,343
Northeast	399,059
West	339,963
Pittsfield	154,399
Outreach	10,154
Phone renewals	132,391
On-line renewals	2,777,297

SYSTEMWIDE CIRCULATION	by Most Popular Materials	% increase/decrease
Books	1,785,536	70% increase
DVD/VHS	1,167,015	96% increase
Youth Books	1,125,546	67% increase
Compact Discs	514,380	41% increase
Youth DVD/VHS	330,693	35% increase
Audio Books	150,415	43% increase
Magazines	104,211	21% increase
Youth Audio Books	48,979	54% increase
Youth CD	41,465	30% increase
Language AV	19,068	81% increase

COLLECTIONS:

ADULT MATERIAL SYSTEMWIDE	342,251
Books	254,388
Compact Discs	31,595
DVD/VHS	29,909
Magazines	11,596
Audio Books	10,010
Language Materials	1,443
Pamphlets/Maps	1,038
Basic Reading Material	889
Art Prints	512
Art Print Carriers	416
Audio Cassettes	269
CD-ROM	186
YOUTH/TEEN MATERIAL SYSTEMWIDE	157,734
Books	135,007
DVD/VHS	11,641
Audio Books	4,437
Compact Discs	2,963
Magazines	1,751
Kits	1,275
CD-ROM	464
Audio Cassettes	184
Pamphlets/Maps	12



Donors

Gift Fund

Abbott's Nursery

Suzanne Admiraal & Patrick O'Brien

Ellie Cox

Charlotte Donnell

Jack Drake

Barb Foster

Friends of the Ann Arbor District Library

Larry Greene, Objet d'Art Incorporated

Ladies' Library Association

Josie & Robert Parker

Anita Stull

In memory of Mary Lou Damm

Pamela Horne

Laura Jarvis

Carol Lessure

Gabriela McCubbreay

Susan Pollans

Mae Sander

Elaine Sims

In memory of Sally Fleming

Faculty Women's Club, Painting Section

In memory of Idilia Emilce Gray

Sandra Ellinger

Idilia's Friends at Geac

Bruce Harrison

Joyce Hume

In Memory of Helen S. Barr

Arbor Village Apartments

The Auerbach Schiro Foundation

Dr. George & Grace Bacon

Lenora Barnes

Chris & Carole Barr

Mary Barr & John Wagner

Dr. Mason Barr, Jr.

Dorothy Beaudoin

Janine & Mark Bennett

Tamiyo Britton

Sandy & Steve Brown

Valerie Castle & Anthony Opipari, Jr.

Janice & John Clay

Dr. Fay & Dr. Michael Cohen

Dr. Joseph Custer

Kathleen & Charles Davenport

Jan & Rich Doda

Barant Downs

Judy & Elliot Eisenbach

Dr. Robert & Sandra Erickson

Katherine Fahs

Janet & David Fritsch

Jerome & Diane Gorski

Dr. Ruth Heyn

Thomas & Judith Ivacko

Dr. Ronald Jensch

King School Social Committee

Norman Klein

Deborah Lahidji

Susan Lake

Karen Kanitz
Bryan Kowalk
Melissa Riser
Peggy Slade
Sue Ann Sukach
Patricia Wilson
William Wilson
Kim Winokur

Karolina M. Holtrey Endowment

Gregg & Kimberly Nichols

In memory of Richard Noble

Nora Maloy

In honor of Kathryn L. Perrine

& in memory of William J. Perrine

Jeannine Perrine Hoffman

In memory of Florence K. Rose

Jack & Shirley Sirotkin

In memory of Robert B. Shafer

& Jeanne Westerdale Shafer

Richard Shafer

In memory of Daniel Walsh

Dr. Dion Frischer

In memory of Fred Walter

Gift of art given by his Family

Youth Collection & Programming

Ann Arbor Doll Collectors

Darling Bridal Showcase

Edwards Brothers Incorporated

Doris Larson

Linda Lavastida-Kapp

Kay & Dan Long

Mary Mayer

Sandra Nichols

Paul Nickel

Frances Barr Noland

Clark Nugent

Marge Rutila

Kathy Schmidt

Jules & Marcia Shafer

Nell Stern

Emma Swartz

Mary Swartz

Heidi, Igor & Max Vizelberg

Rea Ann Anderson Weymouth

Kevin & Laurie Wicks

In memory of Pauline DeLay

Nora Maloy

In memory of Joseph "Joe" Wagner

& in honor of Neil & Grant McLean

William Gosling

In memory of Fred Walter

Jean & Jack DiGiuseppe

In memory of Marcy Westerman

Albert & Barbara Cain

Marilyn Heers Larson

Colleen & Scott Westerman

Judith Westerman & Edward Silver

Timothy Shy

Community Partners

826 Michigan

Alaska Coalition

Alpha Omega Robotics Team 470

American Association of University Women,
Ann Arbor Branch

American Foundation for Suicide Prevention

Ann Arbor Area Community Foundation

Robert Bruce Dunlap Memorial Awards Fund

Ann Arbor Area Downtown Development

Strategy Steering Committee

Ann Arbor Art Center

Ann Arbor Blues and Jazz Festival

Ann Arbor Book Festival

Ann Arbor Center for Independent Living

Ann Arbor Hands-On Museum

Ann Arbor News

Ann Arbor Public Schools

Ann Arbor Storytellers' Guild

Ann Arbor Street Art Fair, the Original

League of Women Voters

Main Street Area Association

Michigan Shakespeare Festival

Michigan Television

Michigan Theater

Mosaic Sphere Studio

National Association for Multicultural Education,
Michigan Chapter

National Society of the Daughters of the American
Revolution, Sarah Caswell Angell Chapter

Neutral Zone

Nicola's Books

Paradigm Quilters

People's Food Co-Op

Performance Network

Pfizer

Purple Rose Theatre Company

Quality 16 Theaters

Rainbow Families Great Lakes

Redbud Productions

SafeHouse Center

SCORE, Counselors to America's Small Business

Shaman Drum Bookshop

South University Art Fair

Target Corporation

Therapaws

Totoro Restaurant

University of Michigan



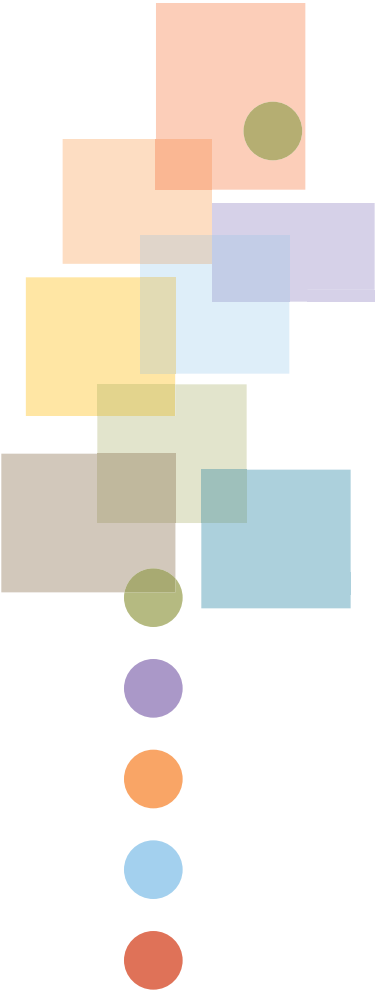
Ann Arbor Summer Festival
Ann Arbor Symphony Orchestra
Ann Arbor Women Artists
Arbor Hospice & Home Care
The Ark
Barnes & Noble Booksellers
Baron Glassworks
Bee Tree Consulting
Bello Vino
Bentley Historical Library
Borders Books and Music
BraveHeart Grief Services
Brewing Hope
Busch's Valu Land
Car & Driver Magazine
Catholic Social Services
City of Ann Arbor
City of Ann Arbor Commission on Disability Issues
Community Television Network
Dance Gallery Studio
DWOT Productions
Eastern Michigan University
Friends of the Ann Arbor District Library
Genealogical Society of Washtenaw County
Great Harvest Bread Company
Huron River Watershed Council
Interfaith Council for Peace & Justice
Jewish Community Center
Ladies' Library Association

UM Center for the Development
of Language and Literacy
UM Center for Middle Eastern &
North African Studies
UM Department of Near Eastern Studies
UM Depression Center
UM Exhibit Museum of Natural History
UM Knight-Wallace Fellows Journalists
UM Life Science Orchestra
UM Office of Lesbian, Gay, Bisexual &
Transgender Affairs
UM President's Initiative on Ethics in Public Life
UM School of Art & Design
UM Special Collections Library
University Musical Society
Washtenaw Community College
Washtenaw County Library for the Blind and
Physically Disabled
Washtenaw Literacy
Wizzywig Collectibles
Ypsilanti Brewing Company
Ypsilanti District Library









DOWNTOWN LIBRARY

343 South Fifth Avenue
Ann Arbor, MI 48104

MALLETTS CREEK BRANCH

3090 East Eisenhower Parkway
Ann Arbor, MI 48108

NORTHEAST BRANCH

2713 Plymouth Road
Ann Arbor, MI 48105

PITTSFIELD BRANCH

2359 Oak Valley Drive
Ann Arbor, MI 48103

WEST BRANCH

2503 Jackson Road
Ann Arbor, MI 48103

734.327.4200

aadl.org

Ann Arbor District Library